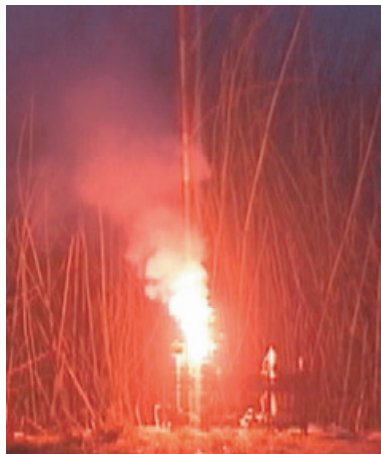


■ Flicker *Flicker*

Red



Green



| Consumption rate/sec | ITEM | NOTE |
|----------------------|-------|-------------------------------------|
| 30 | red | Diminishing spots of flashing light |
| 30 | white | Diminishing spots of flashing light |
| 60 | red | Diminishing spots of flashing light |
| 120 | red | Diminishing spots of flashing light |
| 120 | green | Diminishing spots of flashing light |

■ Flash Tube *Flash Tube*

Yellow



Red



Green



| Consumption rate/sec | Height/m | ITEM | NOTE |
|----------------------|----------|-------------------------|--|
| 1 | 0.3 | flash tube small yellow | Small effect (ball of light) |
| 1 | 0.3 | flash tube small red | |
| 1 | 0.3 | flash tube small green | |
| 1 | 0.3 | flash tube small white | |
| 1 | 1 | flash tube large yellow | (Ball of light) three times as effective as small size |
| 1 | 1 | flash tube large red | |
| 1 | 1 | flash tube large green | |
| 1 | 1 | flash tube BANG | Produces explosive sound, and ball of light |
| 1 | 1 | flash tube large white | |